



1979  2019

RUBY ANNIVERSARY

ST. MARGARET'S EPISCOPAL SCHOOL

Saturday, November 16, 2019

BALBOA BAY RESORT | NEWPORT BEACH





Special Thanks

**HEARTFELT GRATITUDE TO
FOREVER PLAID: RUBY ANNIVERSARY
CHAIR LISA PAYNE AND HER TEAM OF
AMBASSADORS AND SUPPORTERS FOR
THIS INCREDIBLE 40TH ANNIVERSARY
CELEBRATION! LISA'S VISION,
DEDICATION AND ENDLESS ENTHUSIASM
TO BRING OUR COMMUNITY TOGETHER
HAS MADE EVERY ASPECT OF THIS
MAGICAL NIGHT POSSIBLE.**

WELCOME

Dear St. Margaret's Friends,

Welcome to Forever Plaid: Ruby Anniversary, a historic and special occasion to be together celebrating 40 years of St. Margaret's Episcopal School. It is extraordinary to reflect on all we have accomplished as Tartans, and what we are capable of when we are united in our mission and core values in support of our children.

On this celebratory evening, we stand on the shoulders of all those who came before us and look forward in their honor. Together, we will continue to advance a rich and nourishing program for our students that nurtures their hearts and minds, because we know that it makes for a more meaningful and intellectual experience for their learning and growth. Tonight, we make a commitment to the future 40 years of St. Margaret's and beyond.

It is with great reverence that we imagine our founder, The Reverend Canon Ernest D. Sillers, looking upon us tonight with a tremendous sense of pride for how far St. Margaret's has come in his vision, and with his enduring can-do spirit encouraging us, propelling us, to keep moving forward!

Thank you for your ongoing support of St. Margaret's.
Happy Birthday, Tartans!

William N. Moseley
Head of School

Paul C. Westhead
President, Board of Trustees

Dana Sullivan
President, Parent Teacher Fellowship



EVENING PROGRAM

6:00

SIX O'CLOCK IN THE EVENING

HORS D'OEUVRES | CULINARY STATIONS
SPECIALTY COCKTAILS | ENTERTAINMENT

7:30

SEVEN-THIRTY IN THE EVENING

BLESSING
Reverend KC Robertson

WELCOME & TOAST
Head of School, William N. Moseley
Board of Trustees President, Paul C. Westhead
PTF President, Dana Sullivan

AUCTION SHOWCASE
Master of Ceremonies, Darcy Rice
Auctioneer, Grant Snyder

8:30

EIGHT-THIRTY IN THE EVENING

AUCTION ENDS
Auctioneer, Grant Snyder

FUND A NEED

SPECIAL ANNOUNCEMENT & BIRTHDAY CELEBRATION

9:30

NINE-THIRTY IN THE EVENING

FUN AFTER 40 PARTY WITH LUGANO DIAMONDS
in The Library

LIVE MUSIC
by Flashback Heart Attack in the Main Ballroom

COMFORT FOOD & SWEET TREATS

11:00

ELEVEN O'CLOCK IN THE EVENING

RUBY ANNIVERSARY CONCLUDES

Menu

PASSED HORS D'OEUVRES

Smoked Salmon, Cream Cheese and Tarragon Crepe
Vadouvan Spiced Chicken Salad Endive
Sopressata and Pesto Mozzarella Skewer
Karaage Style Jidori Chicken and Sesame Waffle
Veal Meatball and San Marzano Marinara

CULINARY STATIONS

VEGETABLE CRUDITÉ SHOOTER STATION
Carrots, Cucumber, Sweet Peppers, Zucchini, Squash with Dressing Varieties

COASTAL CEVICHE AND AHI POKE STATION
Ceviche Campeche with Bay Shrimp, Bay Scallops and Mussels
Ensenada Shrimp Salad
Ahi Tuna Poke with Crispy Wontons

BRIOCHE TOASTED GRILLED CHEESE STATION
Traditional American and La Querica Prosciutto Fontal Grilled Cheese
Tomato Cream Soup Shooters

AQUARELLO RISOTTO STATION
Herbaceous and Red Risotto
Braised Beef Short Rib

STREET TACO STATION
Adobe Braised Birria Beef
Green Chili Chicken featuring New Mexico Hatch Chilies

LATE NIGHT BITES

SLIDERS & FRY STATION
Traditional Beef, Buttermilk Fried Chicken, and Impossible Beef Sliders
Steakhouse Fries with Dipping Sauce

DIM SUM STATION
Steamed Shrimp Shumai, Roasted Pork Boa, Vegetable Spring Roll,
Crab Rangoon, and Chicken Wonton

DESSERT STATION
Variety of Sweet Sensations



Auction Items

SPORTING EVENTS



#101: LA LAKERS VS. ORLANDO MAGIC

Two (2) 12th Row Seats for the Los Angeles Lakers vs. Orlando Magic on Wednesday, January 15, 2020 at 7:30 p.m.

Value: \$1000 | Donor: Kelly and Philip Anthony



#102: ANAHEIM DUCKS VS. LA KINGS

Four (4) Seats, Section 221, Row L, Seats 1-4 for the Anaheim Ducks vs. LA Kings on December 2, 2019 at 7:00 p.m. Parking is included.

Value: \$888 | Donor: Karen and Scott Garner



#103: ANAHEIM DUCKS "ON THE GLASS"

Three (3) Front Row Tickets at Anaheim Ducks game. Regular season game to be mutually agreed upon. Expires November 16, 2020.

Value: \$750 | Donor: Lara and Dan Horgan



#104: ANAHEIM DUCKS DIAMOND CLUB

Four (4) Diamond Club Tickets, Section 306, Row B, Seats 15-18 for the Anaheim Ducks vs. Washington Capitals on December 6, 2019 at 7:00 p.m. at the Honda Center. One (1) premium preferred parking pass, four (4) passes to the Shock Top Terrace with \$20 food and beverage credit on each ticket.

Value: \$450 | Donor: Channing and Jimmy Freeman



#105: LA DODGERS

Four (4) Tickets, Section 112, Row G, Seats 1-4 for a Los Angeles Dodgers game. Day and time to be coordinated with donor. Parking included.

Value: \$400 | Donor: Dana and Bryan Sullivan



#106: USC MEN'S BASKETBALL VIP EXPERIENCE

Four (4) Tickets (2 courtside/2 in 2nd row) for USC vs. Cal Berkeley on Thursday, January 16, 2020 at 7 p.m. Dinner for four (4) at Galen Center Founders Club, followed by Coach's Pre-Game Chalk Talk. Parking included.

Value: \$500 | Donor: Kristina and Mark Chatow



#107: SPORTS FANATICS PACKAGE

Two (2) premier tickets at STAPLES Center for: LA Clippers vs. Portland Trailblazers on December 3, 2019, LA Lakers vs. Detroit Pistons on January 5, 2020 and LA Kings vs. Colorado Avalanche on March 9, 2020. Admission to the exclusive Lexus Club is also included.

Value: \$1,500 | Donor: Cathy and Matt Moses



WINE

#110: SHAFER HILLSIDE SELECT MAGNUM

One (1) bottle of 2012 Shafer Hillside Select Magnum, Napa Valley, Stag Leap District, Cabernet Sauvignon. Robert Parker 100 points.

Value: \$650 | Donor: Michelle and Tom Chen

#111: RED WINE EXTRAVAGANZA

One (1) bottle of 1999 Matrich Red Wine, one (1) bottle of 2001 Dalla Valle Vineyards Cabernet Sauvignon, two (2) bottles of 2015 Joseph Phelps Insignia Napa Red and four (4) bottles of 2012 Chateau Montelena Estate Napa Valley Cabernet Sauvignon

Value: \$1,320 | Donors: Carl Langfeldt and Amanda Salter, Gena and Ian Griffin, Anouchka and Tim Balog

#112: AN EVENING OF WINE EDUCATION AND FRIENDS

A private in-home wine sampling event for up to twenty (20) guests. Includes a three (3) hour sampling from some of the world's most prestigious wine regions guided by an experienced CSW (Certified Specialist of a Wine), a \$450 gift certificate from Punch Drunk Platter and a \$500 gift certificate from On-Call Events. Date to be mutually agreed upon by winner and wine donor.

Value: \$2,500 | Donors: Gillian Dodd, Margo and Matt Gunderson, SMES Advancement Office

FAMILY FUN



#120: MAGICAL DISNEY RESORT EXPERIENCE!

Four (4) Disneyland Resort Two-Day Park Hopper Tickets for Disneyland Park and Disney California Adventure Park. Includes a One-Night Stay at Disneyland Resort Hotel, a Private Tour of Walt's Apartment (*unavailable to the public for purchase*) for party of four (4), VIP Reserved viewing for one live show or parade of your choice for party of four (4) and a Day in the Park Basket

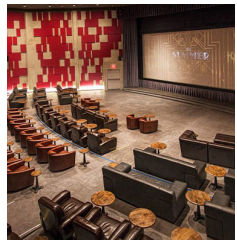
Value: Priceless | Donor: Susie and Josh D'Amaro



#121: PRIVATE TAILGATE PARTY AT PUBLIC 74

Host up to thirty (30) guests for a private tailgate reception prior to your desired St. Margaret's sporting event. Winner will coordinate a pre-arranged meal featuring local, seasonal ingredients with the PUBLIC 74 chef. Date to be mutually agreed upon by winner and PUBLIC 74 management. Spirits and server tip not included. Party not to exceed two hours.

Value: \$1,500 | Donor: PUBLIC 74



#122: PRIVATE MOVIE PARTY AT THE NEW PORT THEATER

With its elegant, modern decor, versatile layout and state-of-the-art audio/visual capabilities, the Port Theater provides all the amenities for an unforgettable event. Winner will receive \$2,000 toward the special event of your choice for 10-300 guests.

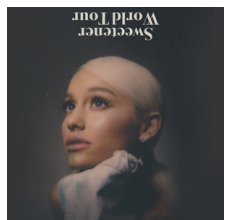
Value: \$2,000 | Donor: Azam and Fariborz Maseeh



#123: BILLIE EILISH: WHERE DO WE GO? WORLD TOUR

Two (2) tickets in the PIT (GA2) for Billie Eilish on Sunday, April 5, 2020 at 7:30 p.m. at The Forum Los Angeles in Inglewood, CA. Tickets will be transferred to winner via email on or before December 1, 2019.

Value: \$1000 | Donor: Anonymous



#124: ARIANA GRANDE: SWEETENER WORLD TOUR

Four (4) tickets (Floor 3) for Ariana Grande on Sunday, December 22, 2019 at 7:30 p.m. at The Forum Los Angeles in Inglewood, CA. Includes round trip transportation in a Mercedes Benz Sprinter or Limo Coach with ice, sodas, and 2 flat screen TV's.

Value: \$2500 | Donor: Anonymous, John Devine, Pearl Barnes

FOR THE KIDS



#130: YOSEMITE SIERRA SUMMER CAMP

Give your child two (2) weeks of unforgettable friends and adventure at Yosemite Sierra Summer Camp. Located in beautiful Bass Lake, California, YSSC helps campers ages 8 to 16 grow in character, skills, relationships and faith while surrounded by wholesome, caring and

enthusiastic staff. Register early to guarantee the session of your choice: Session 1: June 14 – June 26; Session 2: July 5 – July 17; Session 3: July 19 – July 31; Session: August 2 - August 14.

Value: \$3,650 | Donor: Sara and Steve Kuljis



#131: EMERALD COVE DAY CAMP

Two (2) weeks of old-fashioned fun and Christian nurturing await your child at Emerald Cove Day Camp in San Juan Capistrano, CA. Emerald Cove serves children entering kindergarten through grade 4 with adventure games, beach play, horsemanship, archery, crafts, and

nature exploration, led by well-trained staff members who positively shape campers' character, skills, relationships and faith. Three (3) sessions to choose from. Session dates available in January 2020.

Value: \$1,250 | Donor: Sara and Steve Kuljis



#132: SMES INSPIRED PLAYHOUSE

Hours and hours of imaginary play will take place in this re-purposed outdoor playhouse. This charming sweet retreat is guaranteed to bring a smile to your child's face. The wooden playhouse has been customized with SMES colors and accessories to make it the perfect masterpiece...it's one of a kind! Playhouse measures approximately 6' x 6'. Delivery and set-up included.

Value: Priceless

Donor: Parent Teacher Fellowship and Advancement Office

VACATIONS



#140: APARTMENT IN PARIS

Spend seven (7) days and six (6) nights in the heart of Paris' most stylish and chic neighborhoods. Located in the Marais District, this large, newly redecorated 1,000+ square foot, two-bedroom, one-bath apartment is perfect for a family of four—two adults and two children. Airfare is not included. Selected dates based on

availability, expires November 2020.

Value: \$2,800 | Donor: Jennifer and Scott Arundale



#141: BEAVER CREEK RESORT GETAWAY

Spend five (5) days and four (4) nights in this stunning 6-bedroom mountain chalet inside the gates of Colorado's storied Beaver Creek Resort. This extraordinary retreat is minutes from the epic Beaver Creek slopes via continuous shuttle service at the top of the heated driveway.

Accommodates twenty (20) people in five en suite king bedrooms and a 10-bed bunk room. Available either February 5-9, 2020 or March 4-8, 2020.

Value: \$15,000 | Donor: Beth and Robert Healy

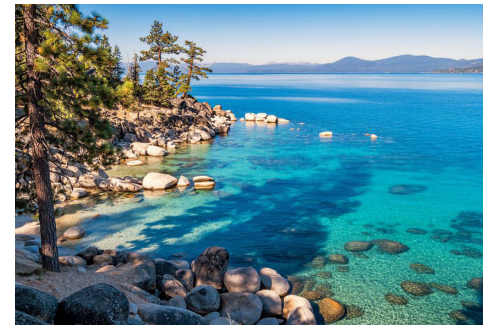


#142: VACATION IN PALM SPRINGS

Four (4) day and three (3) night stay at Desert Knoll, a luxury vacation home conveniently located 5 minutes from downtown Palm Springs, on a quiet street overlooking the Coachella Valley with the San Jacinto Mountains behind it. Amenities of this three-bedroom, three-bathroom home

include private pool, jacuzzi, BBQ, gourmet kitchen, butler's kitchen, fire-pit, 4 flat screen TVs. Available Sunday through Thursday from June 1, 2020 to October 1, 2020. Six (6) person maximum capacity

Value: \$1,300 | Donor: Shawn Haydel and Luis Martinez



#143: LAKE TAHOE VACATION HOME

Enjoy six (6) days and seven (7) nights in a Lake Tahoe three-bedroom, two-bath home on the water. This home has beautiful lake views, full kitchen, private pier, washer and dryer, 2 large TVs, wood burning fireplace, private deck and upscale furnishings. Bedroom

configuration is 1 king, 1 queen and 2 twins. Black out dates: November 16, 2019 to January 4, 2020 and May 25, 2020 to September 14, 2020.

Value: \$7,000 | Donor: Pasquale Montesano



#144: VILLA IN SAYULITA, MEXICO

Five (5) night getaway at Villa Arboles in Sayulita, Mexico. Villa Arboles at Amor Boutique Hotel is thoughtfully and organically built around trees that rise up through the terrace. This family-friendly luxury villa features two en suite master bedrooms and a third bedroom with 2 twin beds,

comfortably sleeping six (6) people. Sayulita is a 40-minute drive from Puerto Vallarta and just 15 minutes north of Punta Mita.

Value: \$6,250 | Donor: Mary Robin and Mark Baziak



#145: ASPEN ALPS CONDO GETAWAY

Enjoy seven (7) nights in a luxurious three-bedroom, three-bath condo right next to Aspen Mountain. This two-story unit has been recently remodeled with beautiful furnishings and fully equipped kitchen. Includes access to bell services, concierge, grocery and liquor shopping, maid

service, Wi-Fi internet, business office services, outdoor heated pool and hot tub. Valid September 1 to December 10, 2020.

Value: \$10,000 | Donor: Sara Lynn and Hugh Eaton

VACATIONS



#146: ONE WEEK IN SNOWMASS VILLAGE

One (1) week stay in a 2 bedroom, 2 bath condo in Snowmass Village, Colorado. Woodbridge 7A is located just across from the Base Village in Snowmass. Located 20 minutes from Aspen. Enjoy skiing, snowmobiling, ice-skating, sleigh rides during the winter and the Aspen Food & Wine

Classic, mountain biking, hiking and concerts during the summer. Available between April 2020 to April 2021.

Value: \$2,500 | Donor: Thierry and Jun Ihara



#147: EXPLORE THE OREGON COAST

All are welcome at Salishan, a luxury destination resort, newly evolved to fulfill your destiny of a pure Oregon Coast escape. The woodsy lodge, secluded between Siletz Bay and Pacific Ocean views, captures the pioneering spirit and rugged style of the Pacific Northwest. Spend three

(3) days and four (4) nights in a Premier guest room, enjoying vistas of the Oregon Coast or the Salishan Golf Course, as well as two (2) complimentary climbs in the Salishan Resort Aerial Park, two (2) one hour services at The Spa and a \$150 credit in the SCOUT Adventure Store. Salishan invites you to recalibrate among high-touch hospitality, holistic wellness, coast-to-coast table dining, and empowering eco-adventures infused with nature. All bookings subject to availability and major holidays.

Value: \$1,500 | Donor: Alpha Wave Investors



#148: LAS VEGAS EXTRAVAGANZA

Two (2) night stay in two (2) adjoining MGM Junior suites with a Las Vegas strip view, balcony, king-sized bed, Whirlpool spa and sitting area with entertainment center and kitchenette.

Value: \$1,000

Donor: Compak Asset Management, Javaid Ansari



#149: STAYCATION AT MONTAGE RESORT

A two (2) night stay in an Ocean View Guestroom with a \$60 daily room breakfast credit. Valid from November 16, 2019 through March 31, 2021.

Value: \$2,000

Donor: Montage Laguna Beach



#150: BAYSIDE GETAWAY AT BALBOA BAY RESORT

One (1) night stay in a beautiful Courtyard King accommodation and \$75 breakfast credit for two (2) in Balboa Bay's signature Waterline Restaurant. Expires December 30, 2019.

Value: \$425

Donor: Balboa Bay Resort

JEWELS



#151: HERMES NECKLACE

New Farandole Long Necklace 80 in rose gold with toggle clasp. Circumference: 31.5"

Value: \$6,600 | Donor: Grace Liu



#152: HERMES BRACELET

Chaine D'Ancre Bracelet, Small Model in rose gold with toggle clasp. Chain length : 6.3"

Value: \$14,200 | Donor: Grace Liu

BUY IT NOW

#160: TARTAN DAD'S WINE COLLECTOR DINNER

Only twelve (12) spots available. Join fellow Tartan Dad wine collectors for an evening of warm discourse over great food and amazing bottles of wine. The four-course dinner prepared by Chef David Martino will take place in The Wine Cellar Room at The Pacific Club on November 21, 2019 at 6:30 p.m. Sommelier Tim Parkhouse will guide guests through the fine-wine tasting experience of Bordeaux and Napa Collector wines, featuring a 1976 Chateau Latour, 1996 Chateau Latour, 1996 Chateau Client, 2000 Chateau Pavie, 1999 Matrich, 2001 Dalla Valle, 2002 Araujo-Eisele, 2013 Larkmead Dr. Olmo, 2015 Insignia, 1946 Don PX Bodegas Toro Albala + Additional Wines.

Cost: \$1,000 per person | Donor: Steve Johnson, Tim McElfish and Chad Hall



#161: CUSTOM 40TH ANNIVERSARY PIECE BY LUGANO

In honor of the school's 40th Anniversary, Lugano Diamond's master craftsmen have created a beautiful St. Margaret's crest highlighted by rubies and sapphires and available in either a pin or pendant. This original piece will surely be treasured by your student commemorating not

only the school's anniversary, but invoking the special memories of their experience at St. Margaret's that will last a lifetime. Buy-now as this special keepsake will only be offered during St. Margaret's 40th Anniversary 2019-2020 school year.

Cost: \$2,500 each | Donor: Lugano Diamonds

THE PARTY CONTINUES...

FUN AFTER 40

with Lugano Diamonds

Join us in The Library from 9:30 to 11:00 p.m.

- Enjoy your favorite late night bites, candy station and adult coffee and cocoa bar.

EVENT DONORS

RUBY LEVEL ONE

LUGANO DIAMONDS

RUBY LEVEL TWO

DAI FAMILY

KIA AND PAUL WESTHEAD

RUBY LEVEL THREE

LAGUNA CELLAR

NOLET SPIRITS

RUBY LEVEL FOUR

FENG CHEN AND YIWEI CHU

JUDY CHEN AND LIYONG WANG

PAM AND KEN CRUSE

FAN FENG AND ZHIQI LIU

MAGGIE AND BRIAN FLORNES

FAN GAO AND XIAOHONG SHANG

YONGHONG HU AND XI LIU

JOHNNY LIAO AND LINGLING WANG

VICKI AND TOM OTTERBEIN

JESSICA AND JAMES PARR

LISA AND CHRISTOPHER PAYNE

CATHY AND RICK STAHL

JACQUELYN AND WILLIAM STEVENSON

LISA AND ROBERT YOUNG

Underwriting

CHEERS TO 40 YEARS

EVENT SPONSORSHIP

Anonymous

Maile and David Bellosi

Jessica and Dan Chen

Abe Marouf

Lisa and Christopher Payne

Huanjie Wang and Hongyu Ji

Dana and Jay Wohlgemuth

Ke Zhang and Xiao Ying Hu

Jinlong Zhang and Ning Wu

THE BIG 4-0

PROFESSIONAL COMMUNITY UNDERWRITING

Lindsey and Daniel Almquist	Elizabeth and Robert Healy
Robert Arrigoni	Changsong Jia and Lijun Zhang
Odette and Bruce Bailey	Anna and Christos Karmis
Wendy and Tim Ballard	Catherine and David Kennett
Krystal and Harold Barkate	Baotong Liu and Lihui Sang
Melody and Fred Burbank	Natalie and Tom Moran
Ningqun Chen	Aleta and Scott Ostlund
Robert Chou and Ran Li	Alisa and William Reising
Laurel and Debashis Chowdhury	Erin and Jaritt Ruff
Harry Cui and Kayla Chen	Beth and Scott Ullem
Lynda and Robert Collier	Lizhi Wang and Xingyan Zuo
Caren and Vernon Edler	Lun Wang and Bin Zhang
Elizabeth and Omid Farr	Jin Zhang and Jun Li
Melinda and John Glowacki	

GRIT CYCLE DONORS

Noha Abboushi	Caren Edler	Michelle Ligao	Deepthi Reddy
Amy Ainsworth	Lillie Eiserman	Yunying Ma	Lori Roberts
Maureen Aitken	Ray Elie	Tessa Maas	Erin Ruff
Lindsey Almquist	Channing Freeman	Nicole Maroutsos	Jennifer Serentelos
Javaid Ansari	Pauline Frye	Emily Maxey	Terri Shams
Wendy Ballard	Michelle Garcia	Dana Melsom	Wendy Smith
Juliet Ballard	Melinda Glowacki	Robert Milo	Jessica Springer
Krystal Barkate	Marina Goffredo	Kory Minor	Dana Sullivan
Mary Baziak	Jill Golubow	Meghan Mitchell	Sara Sullivan
Carole Bertolino	Michelle Goveia	Tanya Mitchell	Laura Tarui
Jen Blau	Jeneen Graham	Ali Monge	Gail Thomas
Jennifer Blount	Stephanie Harvey	Natalie Moran	Galina Vishnevski
Trisha Bowman	Qiwen He	Will Moseley	Alexandra Vitakis
Kristie Caggiano	Robert Healy	Jennifer Moseley	Grace Wang
Amy Capelle	Beth Healy	Jeanine Mouchwar	Amy Warren
Wyndy Carnell	Melissa Hill	Laurel Nelligan	Julie Weidner
Christine Carreon	Stephanie Hoback	Chris Nordstrom	Kristi West
Kristina Chatow	Mandy Hogan	Aleta Ostlund	Kim Westendorf
Stephanie Chopra	Kia Kanatsiz	Vicki Otterbein	Ryan Westendorf
Emma Chu	Sisi Kang	Lynn Ozonian	Paul Westhead
Lyn Clute	Dawn Karahalios	Sophie Paik	Dana Wohlgemuth
Lynda Collier	Catherine Kennett	Kelly Parker	Joseph Wojcik
Rosanna Coveyou	Renee Kerr	Jessica Parr	Brooke Wojcik
Michelle Cox	Tenicka Kingsley	Lisa Payne	Lisa Young
Betsy Denham	Jess Klausner	Sherilyn Pillsbury	
Kari DeVries	Kristin Kyle	Sloan Purcell	
Jennifer Duran	Megan Lavender	Carrie Quintanar	

EVENT COMMITTEE

PAUL C. WESTHEAD, BOARD OF TRUSTEES PRESIDENT
WILLIAM N. MOSELEY, HEAD OF SCHOOL

FOREVER PLAID COMMITTEE CHAIR

LISA PAYNE

PARENT TEACHER FELLOWSHIP

DANA SULLIVAN, PRESIDENT
DANA MELSOM, PRESIDENT-ELECT
MAY SAPRA, TREASURER
CRISTA MARTIN, ASSISTANT TREASURER
LYNDA COLLIER, TECHNOLOGY
JILL GOLUBOW, RESERVATIONS
BETH ADAMANY, OFFICE MANAGER

SCHOOL ADMINISTRATION

ADVANCEMENT

Abby Castillo, *Advancement Service Manager*
Noreen Filippi, *Gifts Administrator*
Jillian Gray, *Director of Alumni Relations*
Stephanie Hoback, *Director of Annual Giving*
Cheri Santora, *Director of Special Events*
Jonathan Tufo, *Executive Director of Advancement*

COMMUNICATIONS & MARKETING

Anne Dahlem, *Director of Communications and Marketing*
Bryan Harney, *Web Technology Service Manager*
Sarah Kustera, *Graphic Designer*
Jennifer Perez, *Communications & Marketing Projects Manager*
Ryan Wood, *Communications Manager*

Volunteers

RUBY ANNIVERSARY AMBASSADORS

Amy Ainsworth	Danielle Fox	Aleta Ostlund
Maureen Aitken	Marisa Gallegos	Vicki Otterbein
Jennifer Arundale	Melinda Glowacki	Jessica Parr
Wendy Ballard	Marina Goffredo	Karen Pierce
Krystal Barkate	Jill Golubow	Kristine Pollard
Michelle Barnett	Michelle Goveia	Carrie Quintanar
Joni Boranian	Lisa Grossman	Cheri Santora
Michelle Chen	Margo Gunderson	Jacquelyn Stevenson
Stephanie Chopra	Stephanie Harvey	Dana Sullivan
Lynda Collier	Beth Healy	Irma Trikas
Michelle Cox	Andrea McAllister	Julie Weidner
Pam Cruse	Alex McCracken	Dana Wohlgemuth
Betsy Denham	Dana Melsom	Brooke Wojcik
Caren Edler	Meghan Mitchell	Lisa Young
Lillie Eiserman	Ali Monge	
Elizabeth Farr	Kristen Olosky	

PROFESSIONAL COMMUNITY PARTNERS

Edgar Barriga & Maintenance Staff
P.J. Elliott
Claire Frahm
Carilan Hill
Karen McCollum
Lisa Mers

————— THANK YOU! —————

THANK YOU TO EVERYONE WHO CONTRIBUTED TO THE SUCCESS OF THE EVENT. WE APOLOGIZE IN ADVANCE FOR ANY ERRORS OR OMISSIONS.

CONGRATULATIONS
St. Margaret's Episcopal School
on this Ruby Anniversary and your
dedication to fostering lives of
learning, leadership and service!



**SOUL
COMMUNITY
PLANET**
HOLISTIC HOSPITALITY

soulcommunityplanet.com
scphotel.com

Congratulations on 40 fabulous years!

Proud partner of St. Margaret's Episcopal School



LUGANO®
DIAMONDS

An experience as remarkable as our collection

NEWPORT BEACH | ASPEN | PALM BEACH | 949.720.1258 | LUGANODIAMONDS.COM

© LUGANO DIAMONDS