


The ARTS

at ST. MARGARET'S

PRESENTS

An Upper School Production

BoEiNg BoEiNg



a nonstop comedy

Written by: Marc Camoletti

OCT. 13-15, 2016

MARCUS D. HURLBUT THEATER

SHOW TIMES

Window Cast Shows

Oct. 13 and 15 at 7 p.m.

Aisle Cast Shows

Oct. 14 at 7 p.m.
and Oct 15 at 2 p.m.

Director: Nathan T. Wheeler

Assistant Director: Carlye Porrazzo

Assistant Student Director: Jake Kuljis

Stage Manager: Madison Mafi

Artwork Inspired by: Kaitlin Kao

PG-13

Artwork Inspired by: Kaitlin Kao

St. Margaret's Episcopal School
Upper School Performing Arts Presents

BOEING BOEING

October 13-15, 2016

Marcus D. Hurlbut Theater

Written by: Marc Camoletti

Director: Nathan T. Wheeler

Assistant Director: Carlye Porrazzo**

Assistant Student Director: Jake Kuljis*

Stage Manager: Madison Mafi*

** denotes St. Margaret's student*

*** denotes St. Margaret's alumni*

WINDOW CAST

Oct. 13 and 15 at 7 p.m.

BOEING BOEING is presented in 2 Acts with one 15 minute
Intermission

CAST OF CHARACTERS

(in order of appearance)

Bernard (a Parisian bachelor)	Tyler Ashman
Gloria (an American air hostess)	Rachel Roy
Berthe (Bernard's housekeeper)	Casey Healy
Robert (a friend of Bernard's)	Jaden Cloobek
Gabriella (an Italian air hostess)	Anneka Miller
Gretchen (a German air hostess)	Rose McCarver

SETTING

The action of the play takes place in Bernard's flat,
near Orly Airport, in Paris circa 1960.

TIMING

Act One

Scene1: Morning

Scene 2: Afternoon

Act Two

Evening

AISLE CAST

Oct. 14 at 7 p.m. and Oct 15 at 2p.m.

BOEING BOEING is presented in 2 Acts with one 15 minute Intermission

CAST OF CHARACTERS (in order of appearance)

Bernard (a Parisian bachelor)	Blake Stevenson
Gloria (an American air hostess)	Elena Plumb
Berthe (Bernard's housekeeper)	Hailey Hageman
Robert (a friend of Bernard's)	Parker Ryan
Gabriella (an Italian air hostess)	Rebekah Olsen
Gretchen (a German air hostess)	Zoe Shor

SETTING

The action of the play takes place in Bernard's flat,
near Orly Airport, in Paris circa 1960.

TIMING

Act One

Scene1: Morning

Scene 2: Afternoon

Act Two

Evening

PRODUCTION TEAM

Director	Nathan T. Wheeler
Assistant Director	Carlye Porrazzo**
Assistant Student Director	Jake Kuljis*
Stage Manager	Madison Mafi*
Assistant Stage Manager	Stephanie Amoukhteh*
Technical Director and Resident Designer	Bryan Dauterive
Production Manager for the Arts	Michele Silverman
Assisting Production Manager for the Arts	Tracy Engel
Costume Design Mentor	Melinda Keane
Costume Designers	Hailey Hageman* (male roles) Elizabeth Haugan* (female roles)
Makeup and Hair Designers	Alyssa Chong*, Valentina Martino*, Zoe Mellard*
Wardrobe Mistress	Miranda Gilbert*
Set Construction and Design	Go Button Productions
Set Dresser and Props	Melinda Keane and Jackie Melbon
Stage Crew	Isabella Blount*, Jennifer Carpenter*, Mina Farahbod*, Brennan Mafi*, Jack Manor*, Keely Yeargin*
Lighting Design	Lauren Standiford*
Sound Design	Jake Kuljis*
Video Production Supervisor	Nicki Yokota
Video Director	Ayla Fox*
Camera Operators	Carson C de Baca*, Ayla Fox*, Declan Landau*, Danny Policicchio*, Brayden Windes*
Marketing Video Producer/Director	Sarah Ko*
Marketing Video Team	Ayla Fox* and Danny Policicchio*
Cast Photos and Show Photography	Jennifer Lynn Photography

DIRECTOR'S NOTE

Boeing-Boeing, originally written in 1962 by the French Playwright Marc Camoletti, was completely reimagined (and rewritten) in 2007. The Broadway production garnered the Tony Award for Best Revival of a Play that same year.

Although distinctly modern, the play contains all the elements of a classical farce: physical humor, fast-paced dialogue, mistaken identities, improbable situations, a twisted plot, absurdity, a single setting, etc. Farce always appears simple to an audience, but is one of the most difficult forms of theater to execute successfully. It demands both physical agility and mental acuity, such as a razor-sharp focus and impeccable timing. The rehearsal process exhausts, exhilarates, and ultimately transforms the ensemble of actors, which makes it a fitting collaborative learning experience for our students.

Comedy serves many functions. For instance, it reveals startling truths about our highly complex, socially constructed worlds within which we all live and attempt to navigate daily. Comedy allows us to laugh at ourselves as well, and therefore cultivates humility. Finally, it helps communities heal, to breathe collectively, and to move on.

During the 1960's the famous American-based Boeing Corporation was adjusting to technological innovations which reflected broader socio-cultural changes taking place across the country. For example, airplanes were becoming more efficient and faster than ever before, just as the feminist movement was taking off.

Boeing-Boeing captures this shifting Zeitgeist brilliantly. The airline industry serves as the perfect comedic vehicle for examining gender and relationship inequalities during those turbulent times. Bernard, the consummate lothario, must adjust his misogynistic thinking about women and relationships in order to advance into the future, or risks falling behind the times. Although all three female air hostesses begin as stereotypes as viewed through his male perspective, they subsequently evolve into fully-realized, independent and empowered women by the end.

Despite all of the swinging doors, innuendo, and ridiculousness, *Boeing-Boeing* at its heart remains a story about love and social progress. Consider just look how far we have traveled, as well as how far we have yet to go!

We hope you enjoy the wild ride that is *Boeing-Boeing* as much as we have delighted in creating the play for you. Buckle up because you're in for a bumpy night!

Nathan T. Wheeler

CAST



TYLER ASHMAN (SENIOR) Bernard

Since coming to St. Margaret's as a freshman, Tyler has performed in *A Midsummer Night's Dream*, *Little Women*, *Argonautika*, *Les Misérables*, *The Skin of Our Teeth*, *The Secret Garden*, the US Studio Plays, and the 2015 and 2016 Coffeehouse Cabaret performances. Most notably, he earned a Best Lead Actor nomination for his performance as Puck in *A Midsummer Night's Dream* and a Best Male Vocalist nomination for his role as Dickon in *The Secret Garden*. He is also a member of SAG-AFTRA, who has appeared in several commercials. Tyler plays the piano, guitar, the cajon (box-drum) and is an officer of the Chapel Leadership Team, Lunch Choir, and ROC. He has enjoyed serving as a debate team captain, Cappies critic and playing on the St. Margaret's Varsity basketball team this year.



JADEN CLOOBECK (JUNIOR) Robert

Jaden is excited to return to the St. Margaret's stage as Robert in *Boeing Boeing*. He first joined the theater department in eighth grade when he played as Knuckles in *Bugsy Malone*. Some of his memorable roles include Romeo/Pete Saltz in *Romeo and Juliet: Together and Alive at Last!*, the Pimp in *Les Misérables* and Henry in *The Skin of Our Teeth*. During his freshman year, he performed in the Theatre I *Rockstars!* showcase, where he impersonated Elvis Presley. He is currently enrolled in Advanced Theatre and entering his third year of training at South Coast Repertory. Jaden is also a member of Lunch Choir, Admission Ambassadors, president of Karaoke Club and is the school mascot: Tommy the Tartan.



HAILEY HAGEMAN (SENIOR) Berthe

Hailey has been heavily involved in the St. Margaret's theater department for five years. She has assisted in the costume production of over 20 Lower School through High School shows, is a member of the school's Cappies Critics Team, co-produced the 2015 student written Studio Plays, received the 2015 Award of Excellence in Dance, and aids the summer program Innovation Stage. Hailey has performed in multiple dance and choral concerts, the 2012 production of *The Lion, the Witch, and the Wardrobe*, *Les Miserables* in 2015, and *The Secret Garden* in 2016. Outside of the theater, Hailey spends her time with friends and is involved in four AP courses.



CASEY HEALY (SENIOR) Berthe

This production is Casey's third show at St. Margaret's. She participated in *Les Misérables* and *The Secret Garden* in the ensemble and was also part of the costume crew for *Argonautika* and *The Skin of Our Teeth*. In addition to St. Margaret's, Casey has performed in plays outside of school for the past 10 years, including *Into the Woods* as Cinderella and *The Lion King* as Timon. Casey is currently in her third year of acting classes at South Coast Repertory. She is very excited to be part of *Boeing Boeing!*

CAST



ROSE MCCARVER (SENIOR) Gretchen

Rose is no stranger to the stage, acting at the local community theater since age five, but this is her first lead in a production with St. Margaret's Episcopal School. Recently she has performed in *The Mighty Real* in *ShowOffs* at the Camino Real Playhouse. She has also performed in supporting roles in *Professor Mack's Last Train*, *Chaos at the Cannery*, *The Merchant of Menace*, *San Juan's Dirty Laundry*, *The Broken Badge*, *Dirty Deeds at the Depot* and *Trouble Bubbles at the Hot Springs*, *Les Misérables*, *Sing Down the Moon*, *Seussical Jr.*, and *No Opera at the Op'ry House Tonight*. Some past lead roles have included that of Glenda in *A Wicked Oz*, Marty in *Grease*, Annie in *Annie*, and Sharpay in *High School Musical*. Rose also has been involved with the SMES dance program and sings in the Highlander Chorale.



ANNEKA MILLER (JUNIOR) Gabriella

Anneka is beyond excited to be a part of *Boeing Boeing!* In the past two years of Upper School productions, she has performed in *The Secret Garden*, *The Skin of our Teeth*, *Les Miserables*, *Argonautika*, and *Studio Plays*, as well as being an active member in dance, drama, and choir. Her most recent accomplishment was receiving a MACY Outstanding Achievement Award for her role as Fakir in *The Secret Garden*. Anneka has also enjoyed performing as a vocalist in *Coffee House Cabaret* for the past 3 years. Outside of SMES, Anneka has been involved in a competitive musical theater group for 4 years and has won numerous competitions for her vocals and comedic acting. She has studied musical theater in New York for the last 3 summers and hopes to continue her studies for many more years to come. "Arrivederci e bello teatro!"



REBEKAH OLSEN (SENIOR) Gabriella

Rebekah has been involved in all aspects of the arts at St. Margaret's by performing in choir, orchestra, dance, costuming, theater, and the technical arts. She is also on the St. Margaret's Cappies team. She has played minor roles in plays and musicals such as *The Fiddler on the Roof*, *The Skin of Our Teeth*, *The Secret Garden*, *Les Miserables*, *Seussical*, and *The Sound of Music*. She also played Medea in the play, *Argonautika* her sophomore year. Rebekah enjoys reading, writing, traveling, singing, and acting. She has a passion for theater and is so excited to be in *Boeing Boeing!*



ELANA PLUMB (SOPHOMORE) Gloria

This is Elena's first show at SMES and she is thrilled to be a part of it! Outside of St. Margaret's, she has performed in many other plays and musicals portraying roles such as Glinda in *The Wiz*, the Caterpillar in *Alice in Wonderland*, and a Storyteller in *Once on This Island*. She also performed in a showcase singing "On My Own" as Eponine from *Les Miserables*. This year she is a Cappies critic and she sings in the St. Margaret's Choir as an Alto. Along with performing, Elena loves playing volleyball and designing fashion. She hopes everyone enjoys the show!



RACHEL ROY (JUNIOR) Gloria

Since Freshman year, Rachel has been involved in the St. Margaret's Theater program. She was part of the Lovely Ladies Ensemble in *Les Miserables* and was a showgirl in *The Skin of Our Teeth*. She also performed a monologue for the 2016 *Coffee House Cabaret*. Rachel is currently enrolled in Advanced Theatre at St. Margaret's and was chosen to participate in the Upper School Studio Plays the previous two years. In 2015, Rachel received a Cappies Commendation.

CAST



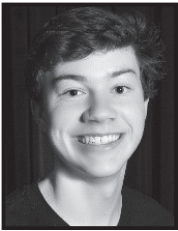
PARKER RYAN (JUNIOR) Robert

This show will mark Parker's 9th production at St. Margaret's. It was his initial role in sixth grade as Jojo in *Seussical the Musical*, which inspired him to continue performing in roles such as Peter in *The Lion, The Witch, and the Wardrobe*; and The Foreman in *Les Miserables*, which was by far his favorite production. Outside of performing, Parker plays soccer, sails at the Dana Point Harbor, works on Tech Crew for other productions, and is a member of the Highlander Choral.



ZOE SHOR (FRESHMAN) Gretchen

This will be Zoe's first Upper School play at St. Margaret's. Last year she participated in the St. Margaret's Middle School musical production of *Guys and Dolls* and outside of school she performed in other productions such as *Drowsy Chaperone*, and *Hairspray* performing the role of Lou Anne at Irvine Valley College. Zoe has also sung in the SMES 2016 Coffee House Cabaret. Zoe is so happy to be performing with such an amazing cast and crew this year!



BLAKE STEVENSON (JUNIOR) Bernard

Blake has participated in the theater program at SMES since third grade, and plans to continue until the end of his twelfth grade year. Outside of school, Blake has also participated in theater productions and workshops such as the El Camino Real play house, the Segerstrom Center for the Arts, and the Mickeney Theatre at Saddleback College. Blake is currently enrolled in AP 2D Studio Art and believes that St. Margaret's is an excellent environment for students to exhibit and improve their artistic capabilities.



JAKE KULJIS (JUNIOR) Assistant Student Director

Jake has been involved in the performing arts at SMES for nearly 10 years, and always loves to explore new positions in the theater. He recently played Ben Weatherstaff in *The Secret Garden* and is the assistant lead critic for the SMES Cappies team. This is the first time he has ever been on the directing side of a production. *Boeing Boeing* has been a very educational experience for him, teaching him what it's like seeing a production develop from outside the cast. Jake has loved being able to help in new ways and hopes you enjoy this amazing production of *Boeing Boeing*.



MADISON MAFI (JUNIOR) Stage Manager

Madi has been a part of tech crew since her first year at SMES in eighth grade, taking the summer technical arts course and immediately followed by signing up for the technical arts elective. Since then, she has assistant stage managed *The Little Mermaid* and *The Secret Garden*, stage managed *Alice in Wonderland* (with an Australian twist) and the US Studios, as well as participating in various tech/video opportunities for smaller productions.

FACULTY



NATHAN T. WHEELER (Director) has been teaching at St. Margaret's since 2007. Previously, he taught acting, voice and coached productions at South Coast Repertory Theater, Chapman University, Interlochen Center for the Arts, Children's Musical Theater of San Jose, the University of San Francisco, Vassar College, Manhattanville College, and the Manhattan Theater Club. He was Assistant Director on "The Mystery of Irma Vep" at San Diego's Old Globe Theatre. As a member of the Actors' Equity Association, he performed and played roles at Actors Theatre of Louisville, South Coast Repertory Theater, American Musical Theater of San Jose, Westport Country Playhouse, Theatreworks of Palo Alto, The Joseph Papp Public Theater, New York City, American Conservatory Theater, Big Apple Playback Theater, the NYC International Fringe Festival and various other off-Broadway houses. Mr. Wheeler is the recipient of the Bay Area Theater Critics Circle award for Outstanding Male Actor in a Drama. He earned a Bachelor of Arts in German and Comparative Literature from Northwestern University and a Master of Fine Arts in Acting from the Tony award-winning American Conservatory Theater (A.C.T.) in San Francisco. Mr. Wheeler is a CA Certified teacher of English and has completed coursework towards a Doctorate in Education in Mind, Brain and Teaching through the Johns Hopkins University School of Education.



BRYAN DAUTERIVE (Technical Director and Resident Designer) works with each of the Divisions in theater technology and stage management. He teaches and supervises student in production situations, provides lighting and scenic design, and collaborates with student designers for all departmental events and activities. Previously, he worked with the Baldwin Park Unified School District as their acting Performing Arts Centers Stage Technician. Mr. Dauterive has extensive experience working with directors, designers, conductors and students to ensure excellent productions. He has taught stage craft through the East San Gabriel Regional Occupation Program at Baldwin Park High School and was recently a lighting designer for the Covina Center for the Performing Arts on several shows. He has designed sets and lighting for numerous plays, dance concerts and musicals for several venues. Bryan is a skilled sound mixer and designer, lighting designer, set designer, carpenter, electrician and rigger. He holds a Bachelor of Arts in Theater Design from California State University Fullerton and has extensive training and education in all aspects of technical theater.



CARLYE PORRAZZO (Assistant Director) Carlye is thrilled to be returning to St. Margaret's-this time, with the privilege of residing "on the other side of the table" after graduating from the school in 2011. She went on to receive her Bachelor of Arts degree in Theatre and a minor in Musical Theatre from The University of Southern California in 2015. After spending some time in the professional realm, Carlye looks forward to returning home to begin a new path in educational theatre. Favorite St. Margaret's throwbacks: Eponine (Les Miserables), Storyteller (Children of Eden), The Witch (Into the Woods), and Jane (Jane Eyre). Endless thanks to Mr. Wheeler-my confidante, cheerleader, and friend-you have always been in my corner, never allowing me to be less than I am, and I am eternally grateful for your wisdom, guidance, friendship, and investment in my life. Learning and growing alongside you has taught me more than I could have ever dreamed, especially at this particular juncture. From Bumblebee #2, to Jane Eyre, to fellow colleague.

Cappies Critics and Award Program for High School Theater

St. Margaret's is proud to participate in the Cappies, a national Critics and Awards Program for High School Theater and Journalism. Orange County is one of the three largest Cappies programs in the nation, with 30 schools participating. St. Margaret's Cappies participants are trained as critics, attend shows at other schools, write reviews, and publish those reviews in the local *Orange County Register*.

CAPPIES CRITICS FOR 2012-2013 ARE:

Jana Phillips (Lead Critic), Jake Kuljis (Assistant Lead Critic),
Rebekah Olsen, Tyler Ashman, Hailey Hageman, Alexis Fintland,
Mitra Alikhani, Elena Plumb, Caroline Ullem



SPECIAL APPRECIATION

St. Margaret's would like to thank all the student and parent volunteers, PTF Arts Alliance, PTF Arts Alliance Chair Kathy Victor and PTF Arts Alliance Assistant Michelle Williams for their support of this show. We would also like to thank all the families who assisted with underwriting cast meals, cast party, Cappies meals, and set and show props.

An asterisk () denotes a St. Margaret's student. A double asterisk (**) denotes a St. Margaret's alumni. Credits reflect information available as of October 3, 2016. The Performing Arts Department makes every attempt to ensure the accuracy of the information in this program and apologizes for any errors.*